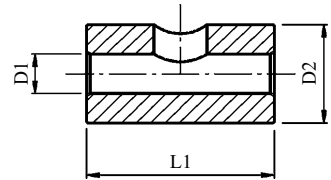


Reduzierbuchsen

Bushing

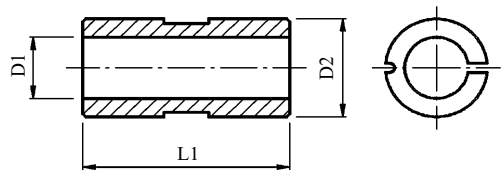
Ausführung A · Type A

D2	18	25	D2	18 h6	25 h6
L1	26	36	L1	26	36
D1	Artikel-Nr. Part No.	Artikel-Nr. Part No.	D1	Artikel-Nr. Part No.	Artikel-Nr. Part No.
2,2		218.246.220	7	218.854.220	118.237.220
2,5		218.471.220	8	218.855.220	118.238.220
2,8		218.247.220	9	218.856.220	118.239.220
3		218.473.220	10	118.220.220	118.240.220
3,5	218.848.220	218.248.220	11		118.241.220
4	218.849.220	118.234.220	12		118.242.220
4,5	218.850.220	218.249.220	12,5	118.227.220	218.476.220
5	218.851.220	118.235.220	14	118.224.220	118.244.220
5,6	218.852.220	218.474.220	16	118.226.220	118.246.220
6		118.236.220	18		118.248.220
6,3	218.853.220	218.475.220	20		118.250.220



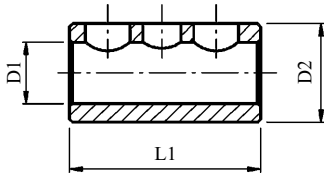
Ausführung B · Type B

D2	32	40
L1	65	72
D1	Artikel-Nr. Part No.	Artikel-Nr. Part No.
8	218.380.220	218.446.220
10	218.381.220	218.447.220
12	218.382.220	218.448.220
16	218.383.220	218.449.220
20	218.384.220	218.450.220
25	218.385.220	218.451.220
30		218.452.220
32		218.453.220



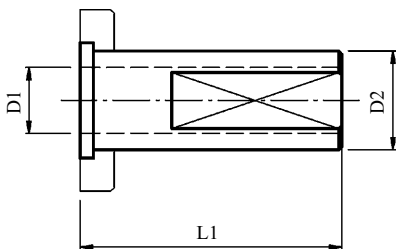
Reduzierbuchsen

Bushing



Ausführung C · Type C

D2	32	40	50	32
L1	60	75	85	60
D1	Artikel-Nr. Part No.	Artikel-Nr. Part No.	Artikel-Nr. Part No.	Artikel-Nr. Part No.
6	218.858.220	-	-	-
8	218.862.220	218.868.220	-	-
10	218.863.220	218.869.220	218.883.220	-
12	218.864.220	218.870.220	218.884.220	-
16	218.865.220	218.871.220	218.885.220	-
20	218.866.220	218.872.220	218.886.220	-
25	218.867.220	218.873.220	218.887.220	218.882.220
32	-	218.874.220	218.888.220	-
40	-	-	218.877.220	-



für Verwendung mit Klemmring
DIN 69 880, Form Z1

for Use with Clamping Ring
DIN 69 880, Form Z1

Ausführung D · Type D

D2	20	30	40	50	60
Klemmring Clamping Ring	201.020.150	202.020.150	203.030.150	204.040.150	205.050.150
L1	55	77	85	106	88
D1	Artikel-Nr. Part No.	Artikel-Nr. Part No.	Artikel-Nr. Part No.	Artikel-Nr. Part No.	Artikel-Nr. Part No.
6	211.001.220	-	-	-	-
8	211.002.220	-	-	-	-
10	211.003.220	211.010.220	211.022.220	-	-
12	211.004.220	211.011.220	211.023.220	-	-
16	211.005.220	211.013.220	211.025.220	-	-
20	-	211.014.220	211.026.220	211.029.220	-
25	-	211.015.220	211.027.220	211.030.220	211.033.220
32	-	-	211.028.220	211.031.220	211.034.220
40	-	-	-	211.032.220	211.035.220
50	-	-	-	-	211.036.220

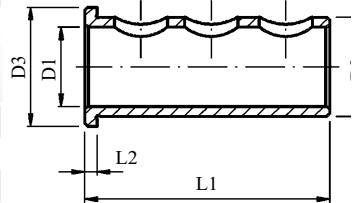
Reduzierbuchsen

Bushing

Ausführung E · Type E

D2	16	25	32	50	60	1 1/4"
D3	20	30	37	59	69	37
L1	44	60	60	60	67	60
L2	3	3	3	5,5	5,5	3

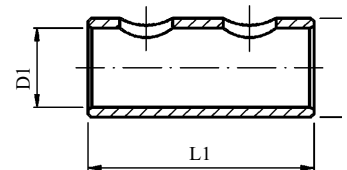
D1	Artikel-Nr. Part No.	Artikel-Nr. Part No.	Artikel-Nr. Part No.	Artikel-Nr. Part No.	Artikel-Nr. Part No.	Artikel-Nr. Part No.
6	-	-	1012090	-	-	-
8	-	218.990.220	1012091	-	-	-
10	7.030.021	218.991.220	1012092	219.070.220	219.080.220	-
12	7.030.020	218.992.220	1012093	219.071.220	219.081.220	-
14	-	-	218.988.220	-	-	-
16	-	218.993.220	1012094	219.072.220	219.082.220	-
18	-	-	218.989.220	-	-	-
20	-	218.994.220	1012095	219.073.220	219.083.220	-
25	-	-	1012096	219.074.220	219.084.220	-
32	-	-	-	219.075.220	219.085.220	-
40	-	-	-	219.076.220	219.086.220	-
50	-	-	-	-	219.087.220	-
3/8"	-	-	-	-	-	218.970.220
1/2"	-	-	-	-	-	218.971.220
5/8"	-	-	-	-	-	218.972.220
3/4"	-	-	-	-	-	218.973.220
1"	-	-	-	-	-	218.974.220



Ausführung F · Type F

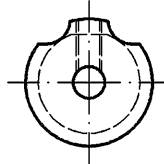
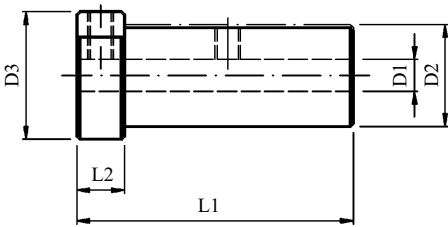
D2	16	40	50
L1	36	61	75

D1	Artikel-Nr. Part No.	Artikel-Nr. Part No.	Artikel-Nr. Part No.
6	-	-	-
8	-	219.030.220	-
10	7.040.119	219.031.220	219.020.220
12	-	219.032.220	219.021.220
16	-	219.033.220	219.022.220
20	-	219.034.220	219.023.220
25	-	219.035.220	219.024.220
32	-	219.036.220	219.025.220
40	-	-	219.026.220
50	-	-	-



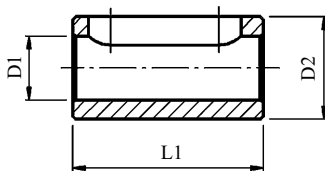
Reduzierbuchsen

Bushing



Ausführung G · Type G

D2	32	32
D3	40	40
L1	87	82
L2	15	10
D1	Artikel-Nr. Part No.	Artikel-Nr. Part No.
8	218.945.220	-
10	218.946.220	-
12	218.947.220	-
16	-	218.948.220
20	-	218.949.220
25	-	218.950.220



Ausführung H · Type H

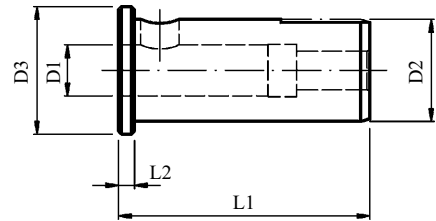
D2	32	40	50
L1			85
D1	Artikel-Nr. Part No.	Artikel-Nr. Part No.	Artikel-Nr. Part No.
10	-	-	218.883.220
12	-	-	218.884.220
16	-	-	218.885.220
20	-	-	218.886.220
25	-	-	218.887.220
32	-	-	218.888.220
40	-	-	218.877.220

Reduzierbuchsen

Bushing

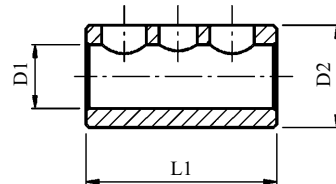
Ausführung I · Type I

D2	32	32	
D3	40	40	
L1	79	92	
L2	5	18	
D1	Artikel-Nr. Part No.	Artikel-Nr. Part No.	
16	218.953.220	-	
20	218.954.220	-	
25	-	218.955.220	



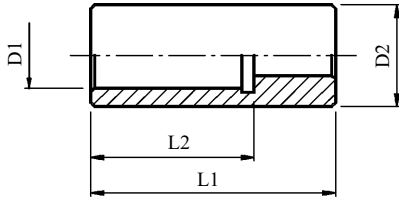
Ausführung K · Type K

D2	1 1/4"	D2	1 1/2"
L1	60	L1	85
D1	Artikel-Nr. Part No.	D1	Artikel-Nr. Part No.
-	-	6	-
3/8"	218.927.220	8	218.920.220
1/2"	218.928.220	10	218.921.220
5/8"	218.929.220	12	218.922.220
3/4"	218.930.220	16	218.923.220
7/8"	218.931.220	20	218.924.220
1"	218.932.220	25	218.925.220
-	-	32	218.926.220
-	-	40	-



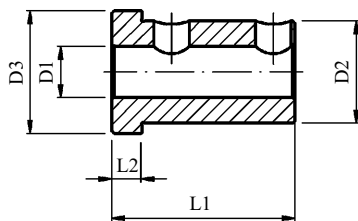
Reduzierbuchsen

Bushing



Ausführung L · Type L

Spann-Ø D1	Artikel-Nr. Part No.	D2	L1	L2
16	218.242.220	25	60	42
20	218.241.220	25	60	40



Ausführung M · Type M

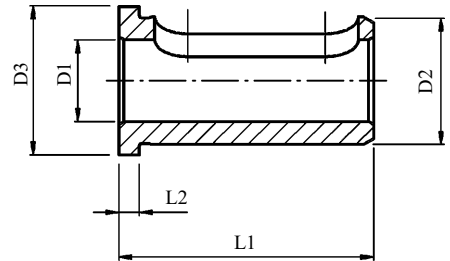
D2	40	40
D3	48	48
L1	72	88
L2	12	10
D1	Artikel-Nr. Part No.	Artikel-Nr. Part No.
8	219.050.220*	219.010.220
10	219.051.220	219.011.220
12	219.052.220	219.012.220
16	219.053.220	219.013.220
20	219.054.220	219.014.220
25	219.055.220	219.015.220
32	219.056.220	219.016.220

Reduzierbuchsen

Bushing

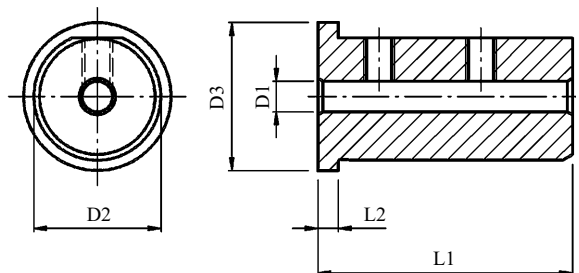
Ausführung N · Type N

D2	25	40
D3	29	44
L1	50	58
L2	4	5
D1	Artikel-Nr. Part No.	Artikel-Nr. Part No.
16	219.114.220	219.103.220
20	219.115.220	219.104.220
25	-	219.105.220
32	-	219.106.220



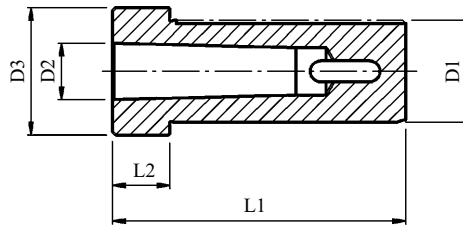
Ausführung P · Type P

D2	25	40
D3	29	44
L1	50	58
L2	4	5
D1	Artikel-Nr. Part No.	Artikel-Nr. Part No.
6	219.110.220	-
8	219.111.220	219.100.220
10	219.112.220	219.101.220
12	219.113.220	219.102.220



Reduzierhülse mit Morsekegel

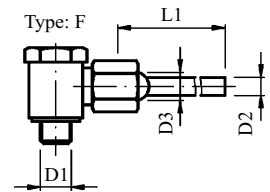
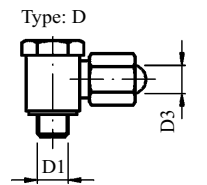
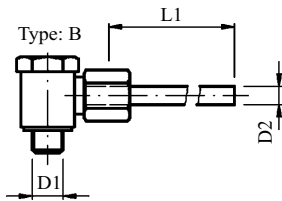
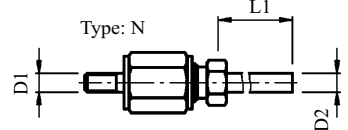
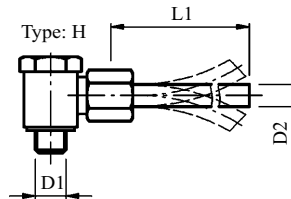
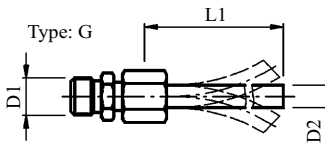
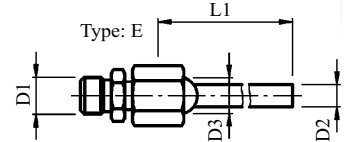
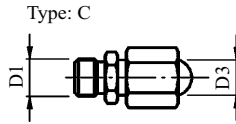
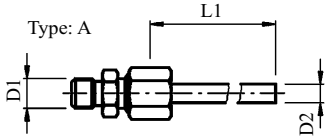
Taper Sleeves with Morse Taper



D1	(D2) MK-DK	L1	Artikel-Nr. Part No.	Klemmring Form Z1 Clamping Ring Form Z1	D3	L2
30	1	76	202.151.220	202.020.150		
30	2	77	212.000.220	202.020.150		
30	3	90	212.161.220	202.020.150		
32	1	79	218.951.220	-	40	5
32	2	92	218.952.220	-	40	18
32	3	112	218.956.220	-	40	38
40	1	115	213.024.220	203.030.150		
40	2	95	223.025.220	203.030.150		
40	3	90	213.030.220	203.030.150		
40	4	115	213.035.220	203.030.150		
40	1	79	219.057.220	-	48	9
40	2	92	219.058.220	-	48	22
40	3	112	219.059.220	-	48	42
50	2	118	214.040.220	204.040.150		
50	3	118	214.045.220	204.040.150		
50	4	118	214.050.220	204.040.150		
60	3	150	215.015.220	205.020.150		
60	4	150	215.020.220	205.020.150		
60	5	150	215.025.220	205.020.150		
1 1/4"	1	79	218.957.220	-	40	5
1 1/4"	1	92	218.958.220	-	40	18
1 1/4"	1	112	218.959.220	-	40	38

Rohrverschraubungen

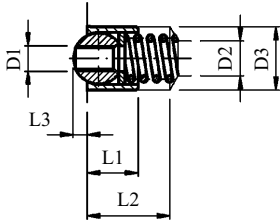
Coolant Tubes



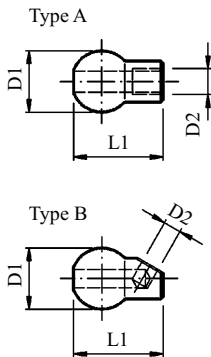
D1	Type Type	D2	D3 Kugeldüse Nozzle	L1	Artikel-Nr. Part No.
M 8x1	A	Ø5	-	60	218.844.220
M 8x1	B	Ø5	-	60	218.845.220
M 8x1	G	Ø6 (flex. Rohr)	-	100	0.000.398
M 8x1	H	Ø6 (flex. Rohr)	-	100	0.000.400
M 10x1	A	Ø6	-	90	218.469.220
M 10x1	B	Ø6	-	90	218.468.220
M 10x1	G	Ø6 (flex. Rohr)	-	100	0.000.407
M 10x1	H	Ø6 (flex. Rohr)	-	100	0.000.412
M 10x1	A	Ø8	-	100	218.445.220
M 10x1	B	Ø8	-	100	218.460.220
M 10x1	C	-	Ø10 (M 6)	-	218.825.220
M 10x1	D	-	Ø10 (M 6)	-	218.824.220
M 10x1	E	Ø6	Ø10 (M 6)	90	0.000.135
M 10x1	F	Ø6	Ø10 (M 6)	90	0.000.366
M 4	-	Ø4	-	100	0.001.159

Kugeldüsen

Nozzle Unit



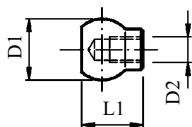
Kugel Ball	D1	Artikel-Nr. Part No.	D2	D3 $+0,03$	L1	L2	L3
Ø8	M 4	218.180.000	5,5	9,88	8	13	2,2
Ø10	M 6	218.181.000	6,8	11,88	10	15	3
Ø12	M 6	218.182.000	6,8	13,88	12	17	4



Kugel D1 Ball D1	Type Type	D2	L1	Artikel-Nr. Part No.
Ø12	A	Ø3,5	17,5	7.070.066
Ø12	B	Ø3,5	17,5	7.070.067
Ø15	A	M 6	20	7.070.052
Ø12	Ø5	Ø3,8	20	7.070.053

Verschlussstücke

Nozzle Unit

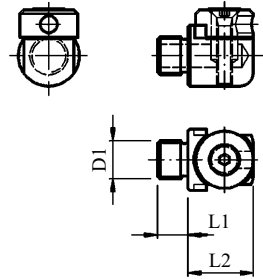


Kugel D1 Ball D1	Artikel-Nr. Part No.	D2	L1
Ø12	7.070.065	M 5	12
Ø15	7.070.051	M 5	17

Ringdüsen

Nozzle Unit

D1	Artikel-Nr. Part No.	L1	L2
M 8x1	0.000.377	8	14
M 10x1	0.000.378	8	17



Verlängerung für Ringdüsen

Nozzle Unit

D1	Artikel-Nr. Part No.	L1	L2	D2
M 8x1	7.071.299	10,5	20	M 8x1
M 8x1	7.071.084	7,5	30	M 8x1
M 10x1	7.040.524	7,5	32	M 10x1
M 10x1	7.071.083	7,5	48	M 10x1

